

The background of the entire page is an abstract, low-poly geometric pattern in various shades of blue. The shapes are irregular polygons that create a sense of depth and movement, resembling a crystalline or architectural structure. The colors range from deep navy to light sky blue, with some areas appearing more translucent or reflective.

biamp.

WINTER 2021

POCKET GUIDE

An Introduction to Biamp's Latest Innovations

TESIRAFORTÉ X



Next Generation Meeting Room Signal Processors

The TesiraFORTÉ™ X Series is the next generation of open architecture conference room signal processors. Combining the core functionality of the current TesiraFORTÉ line, along with the capabilities of TesiraCONNECT™ TC-5D and Tesira™ EX-UBT in a sleek, streamlined design, TesiraFORTÉ X is perfectly suited for modern conferencing environments, where space is at a premium.

Compact enough to be installed anywhere, including behind a wall mounted display, TesiraFORTÉ X includes 4 PoE+ network ports to connect other conferencing equipment and supports both AVB and Dante devices out of the box. The TesiraFORTÉ X series includes X 400, X 800, and X 1600 models, featuring 4, 8, and 16 channels of AEC respectively, allowing the processors to support numerous digital microphones. A USB interface for audio connections to UC host devices is also included, allowing HID synchronization between Tesira and soft codec applications.

The new devices also feature Biamp Launch™, a new Biamp exclusive technology that allows devices to configure themselves.

KEY FEATURES

- Designed for modern meeting rooms with a small form factor
- Selectable network configuration—configure any network port for Dante, AVB media, VoIP, or control traffic
- Up to 16 channels of AEC, flexibly available across analog and digital I/O
- USB port with support for HID synchronization with UC platforms
- Next generation VoIP implementation
- Support for monitoring in SageVue™
- 2x2 analog I/O, 4 GPIO ports, 5 network ports (4 PoE+)
- 1-touch configuration and tuning with Biamp Launch



DEVIO SCX



The Automated Power of Devio Comes to Larger Spaces

Devio™ SCX is a new breed of conferencing hub that brings the simplicity and speed of Devio to larger meeting spaces. Devio's automated setup and configuration has been dramatically enhanced in the form of the new Biamp Launch feature, enabling extraordinary audio in no time. Users simply connect their room devices and press the Launch button on the Devio unit. Devices are identified and configured with zero user interaction before automatic tuning is performed, optimizing the system's audio settings to best suit the environment. Once the programming and tuning process is completed the system produces a report, providing users with a detailed summary of system performance and room acoustic quality.

The SCX series further extends the power of Devio's automatic functions in support of a wide variety of spaces. More than just a signal processor, Devio SCX includes five network ports for connecting other Biamp network peripherals, including the TEC-X™ control pad, Parlé™ microphones, and PoE+ driven amplifiers like the AMP-450BP, along with a USB port for connections to UC host platforms, such as room systems. The USB interface also provides HID support to UC software.

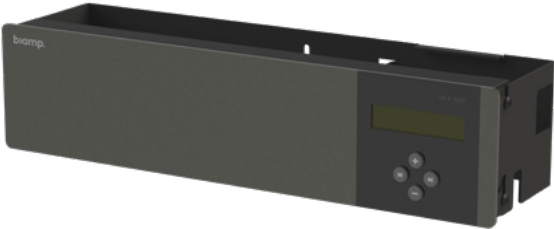
Devio SCX 400 also supports up to four Parl  microphones, while the SCX 800 supports up to eight Parl  microphones for large spaces.

KEY FEATURES

- 1-touch configuration and tuning with Biamp Launch
- Extends Devio into medium and large meeting spaces
- 5 network ports (4 PoE+) for Biamp device connections
- USB port with support for HID synchronization with UC platforms
- Devio SCX 400 / Devio SCX 800 support up to 4 or 8 Parl  microphones respectively
- Next-generation VoIP implementation
- Support for monitoring in SageVue



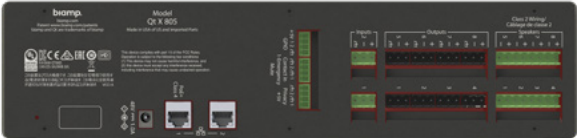
CAMBRIDGE QT X SERIES



Direct-Field and In-Plenum Sound Masking in One Powerful Solution

Combining our QtPro™ and DynasoundPro™ technologies into one powerful solution, the new Cambridge Qt™ X series offers both direct-field and in-plenum functionality to address the full spectrum of sound masking needs. Qt X controllers are available in 3-zone, 6-zone, and 8-zone models, and utilize existing emitter lines from both the QtPro and DynasoundPro families.

This series is designed to smoothly integrate with both Biamp's existing Tesira line and future paging solutions to better enable unified programming and deployment of sound management applications.





KEY FEATURES

- Supports both direct-field and indirect sound masking
- Seamless compatibility with convenience paging microphones and background music sources
- System architecture enables greater reliability, easy expansion, and network capabilities
- Enables out-of-the-box compatibility with any building's life-safety system
- AVB and Dante compatibility allows for easy integration with a broad range of devices
- Compatible with existing Qt and Dynasound emitters
- Full SageVue support for easy, centralized system management

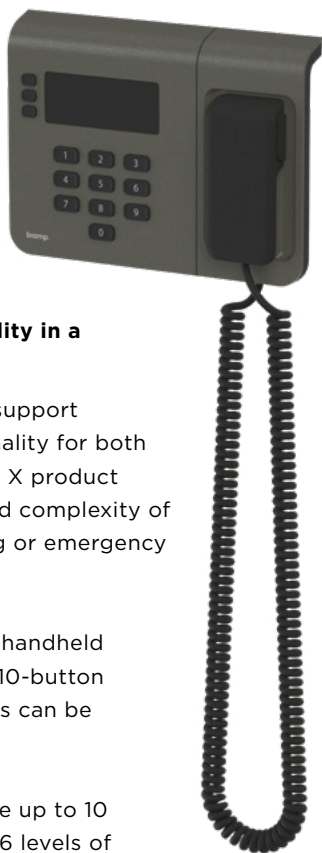


Qt emitters



Dynasound emitters

NPX NETWORK PAGING SYSTEM



Complete Paging Functionality in a Single Solution

Biamp NPX paging stations support convenience paging functionality for both the Tesira and Cambridge Qt X product lines, eliminating the cost and complexity of integrating enterprise paging or emergency communication systems.

Available with gooseneck or handheld microphones in both 4- and 10-button versions, NPX paging stations can be mounted to any surface.

Each paging station can store up to 10 recorded messages, and its 16 levels of paging priority enable unprecedented paging flexibility for end users and integrators alike.

KEY FEATURES

- Natively integrates with both Tesira and Qt X
- 4 or 10 button versions
- Available with gooseneck or handheld mics
- Wall-mountable
- PoE-powered
- Stored message playback
- Customizable preambles
- 16-paging priority levels
- Push-button security code
- Supports message playback via the Tesira event scheduler



DESONO EX LOUDSPEAKERS



Expansive Audio Delivered in a Sophisticated Design

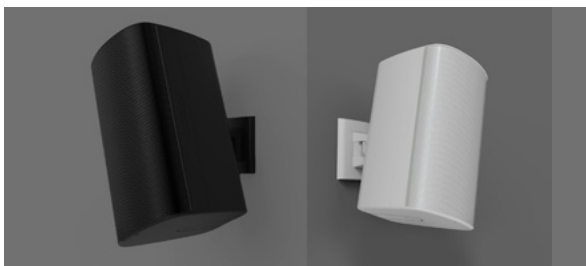
Desono™ EX surface mount loudspeakers provide excellent acoustic performance and elegant aesthetics with time-saving installation features for a diverse range of indoor and outdoor distributed applications, including presentation spaces, bars and restaurants, resorts and premium hospitality, multi-purpose spaces, themed entertainment, and sports facilities.

Four models available:

- EX-S6: 6.5" 2-way surface mount loudspeaker for applications requiring exceptional audio coverage in a small visual footprint
- EX-S8: 8" 2-way surface mount loudspeaker for detailed voicing with projection
- EX-S10: 10" 2-way surface mount loudspeaker for excellent musicality with deep low frequency
- EX-10SUB: 10" Subwoofer for use in distributed applications when additional bass is required

KEY FEATURES

- Two-Way Design
 - Consistent coverage from coaxial drivers
 - High-fidelity music and speech reinforcement
 - Low-frequency extension and flat frequency response
- Discreet and modern aesthetics
 - Outdoor ready and indoor-elegant
 - Hidden/discreet wiring ingress
- Mounting Flexibility
 - ClickMount™ Pan-Tilt Bracket: Pan 60° to each side and at least 24° of up or down tilt
 - ClickMount U-Bracket: Provides 100° of rotation to either side of the loudspeaker
- Certifications:
 - UL 1480A (USA)
 - CSA 62368-1 (Canada)
 - EN54-24 (EU)
- Theft and vandalism resistance
- Available in black or white finishes



CLICKMOUNT LOUDSPEAKER BRACKETS

Low-Profile, Indexing Mounting Brackets

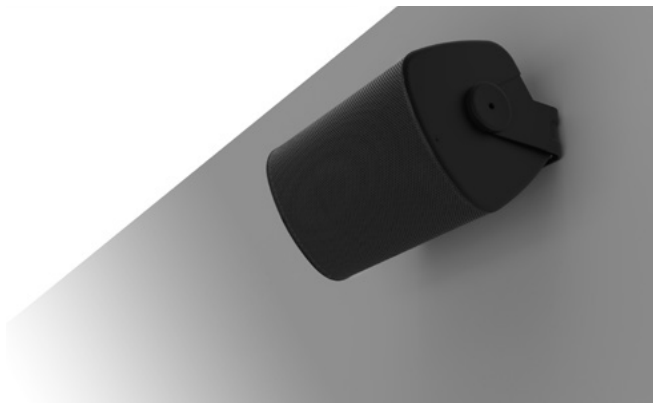
New for 2021, our latest ClickMount™ brackets provide installers with two distinct mounting options and are designed for use with our new line of Desono EX loudspeakers.

ClickMount Pan-Tilt Brackets

These brackets feature a tamper-proof aiming lock mechanism, theft-deterrent loudspeaker-to-bracket locking, and a watertight interface that seals all connections from moisture.

- Tool-free wiring connectors hidden inside the wall bracket
- Fast, tool-free click-to-mount loudspeaker installation
- Mount loudspeaker in vertical or horizontal orientation without moving bracket mounting position





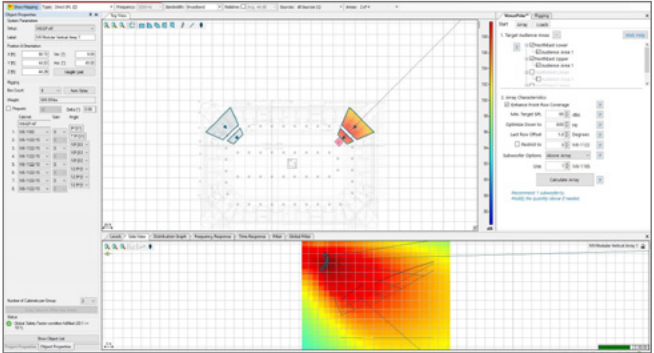
ClickMount U-Brackets

Perfect for use in horizontal or vertical installations, these brackets feature rotatable, tool free, locking and a watertight wiring connector with gland nut.

- Low-profile design keeps loudspeakers as close to the wall as possible
- Indexing teeth on loudspeaker and bracket provide consistent, repeatable aiming angle
- Integrated hex screw for vandal and theft protection
- Multiple slots and holes on yoke provide secure connections to any surface

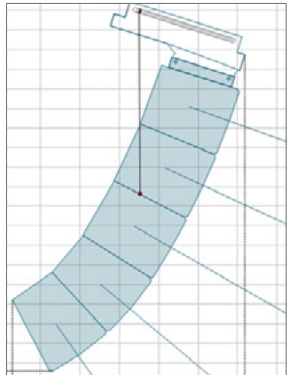


VENUEPOLAR



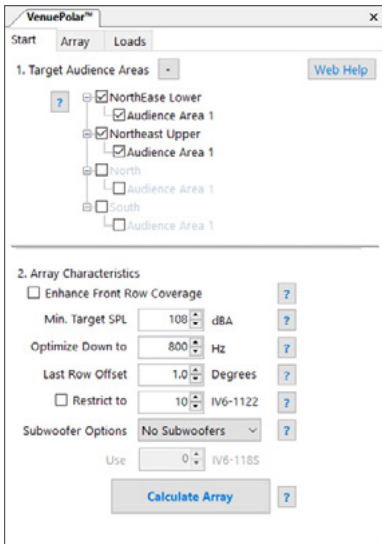
Simplified Design for Loudspeaker Systems

VenuePolar™ is an EASE Focus plugin that automates the loudspeaker system design for the Community™ IV6 Modular Vertical Array. This tool helps system designers quickly and easily determine the recommended cabinet quantity, model, frame angle, splay angle, and how to set the 55 Passive Acoustic Optimization settings on each IV6 cabinet in a venue layout. This tool uses custom, proprietary algorithms to determine all of these settings.



KEY FEATURES

- Automatic configuration for an IV6 array
 - Cabinet quantity
 - Cabinet model (5°, 15°, subwoofer)
 - Frame angle (down tilt angle)
 - Splay angle (inter-cabinet angle)
 - Passive filter optimization
- Mechanical loads and safety factor calculator



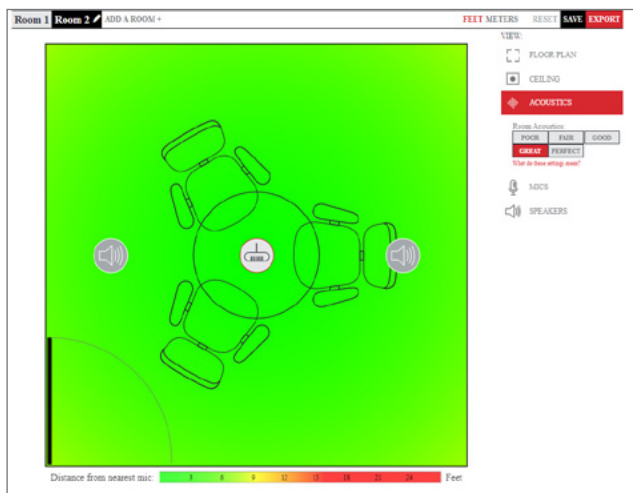
CONFERENCE ROOM DESIGNER

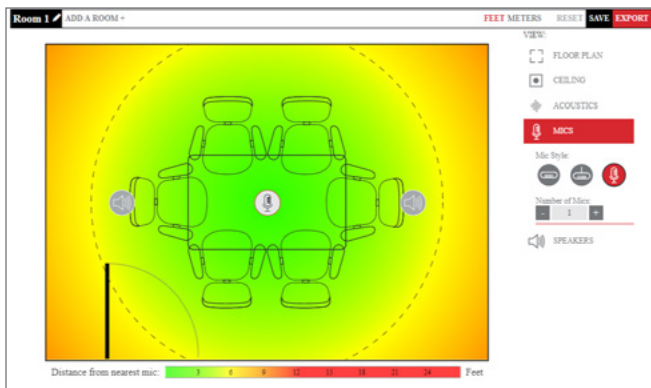
Generate Accurate Room Designs in Minutes

Our new Conference Room Designer makes arriving at the ideal Biamp solution for any space easier than ever. This new online tool allows users to create accurate room designs and generate full equipment lists.

1. Set up your space

- Customize your room, including size, acoustic properties, door locations, and ceiling tiles
- Specify the size, shape, and location of tables
- Account for ceiling obstacles like lights or HVAC components
- Include multiple rooms in each design





2. Customize the solution

- Select your microphone and loudspeaker types
- Use heat maps to visualize coverage for both
- Choose to cover the entire room or focus on the table

3. Generate the design

- The generated PDF document contains everything needed
- Plan views of every room with in-room component locations
- A full list of all equipment necessary including part numbers
- Use it in quote or as-built documentation
- Comes fully formatted with a cover page, project, and room names



To learn more about the products in the Biamp pocket guide, scan the code below.



CONTACT US:

**9300 S.W. Gemini Dr.
Beaverton, OR 97008
USA**

**E: biampinfo@biamp.com
W: biamp.com**

**1.800.826.1457
+ 1.503.641.7287**

