

The background of the entire page is a vibrant blue digital landscape. It features several glowing, three-dimensional cubes of varying sizes, some of which are illuminated from within, casting a soft blue glow. The scene is filled with vertical streams of white and blue data points, resembling a digital rain or a data waterfall. The ground is a grid of glowing blue lines, with small, colorful spheres (purple, blue, and white) scattered across it, suggesting a complex data environment or a virtual cityscape.

# *cue*

PRODUCT OVERVIEW

JANUARY 2020

[WWW.CUESYSTEM.COM](http://WWW.CUESYSTEM.COM)

## About CUE

---

More than 29 years CUE designs, manufactures and markets IP-based integration systems with beautiful control panels that enhance lifestyle, work-style, entertainment and communication. CUE technology is designed to bring prestige, usability and enjoyment to consumers. CUE provides the essential enabling hardware and software for a wide variety of solutions. CUE solutions include residential, corporate, educational, industrial and government applications. CUE has partners for worldwide distribution network.

CUE manufactures a wide range of control panels, including beautifully styled touch screen panels, architecturally stunning wall mounted button panels, as well as wide range of controllers and interfaces.

CUE offers software applications which enable to use any Apple iOS, Android and Microsoft Windows device as a Cue System control panel.

CUE saves system integrator's time and money with powerful, professional, yet easy to use Cue Visual Composer creation tool. This allows drag & drop software authoring with a vast library of graphic objects and device drivers.

CUE provides the hardware-link between multi-vendor home theatre, multimedia, video-conferencing, security, HVAC and other equipment. CUE has an expanding range of interfaces including IP, RS-232/422/485, KNX, DMX512, DALI, EnOcean, dry-contact-relay closure, IR emulation and transmission, general I/O, analog to digital signal conversion and voltage ramp output to name a few.

CUE offers touchONE reservation system - complete multilingual room & desk reservation solution for company's workplaces, boardrooms, conference rooms, lecture rooms, auditoriums, classrooms, universities, hotels, sports centres and other meeting places as well as for large corporate installations.



# Table of Contents

---

<b>Commercial Applications</b>	<b>4</b>	<b>Mobile Solution</b>	<b>20</b>
<b>Residential Applications</b>	<b>6</b>	appCUE	
<b>Reservation System</b>	<b>8</b>	<b>Controllers</b>	<b>21</b>
Room Reservation Panels		Wall-mount   Free Standing Models	
touchONE-7-M		controlCUE-hub	
touchONE-10-M		controlCUE-basic	
touchONE-12-M		Rack-mount   Free Standing Models	
Overview & Administration & Data Concentrator Units		controlCUE-versatile	
touchONE-overview		controlCUE-one	
touchONE-manager		controlCUE-two	
touchONE-concentrator		DIN Rail Models	
Workplace Reservation Interfaces		controlCUE-versatile-d	
touchONE-4		controlCUE-dali-d	
touchONE-desk-55		controlCUE-knx-d	
Applications		controlCUE-dmx-d	
touchONE-app		controlCUE-enocean-d	
touchONE-sensor-app			
touchONE-control-widget		<b>Lightweight Controllers</b>	<b>24</b>
<b>Home Automation</b>	<b>10</b>	Rack-mount   Free Standing Models	
<b>Cloud-based Management</b>	<b>11</b>	smartCUE-relay	
<b>Programming Tools</b>	<b>12</b>	smartCUE-versatile	
Cue Visual Composer		DIN Rail Models	
<b>Technologies Integration</b>	<b>13</b>	smartCUE-versatile-d	
<b>Supported Technologies</b>	<b>14</b>	<b>Graphic Player</b>	<b>25</b>
<b>Basic Control Solution</b>	<b>16</b>	signCUE-one	
liteCUE-basic		<b>Interfaces</b>	<b>26</b>
liteCUE-tap		Power Switching	
<b>Wired Keypads</b>	<b>17</b>	relayCUE-8	
Button Keypads		PES03	
keypadCUE-55		Outputs	
Touch-screen Keypad		PEA208	
tapCUE-4		Dimmers	
<b>Wired Touch Panels</b>	<b>18</b>	PET102	
Built-in Models		PET105	
touchCUE-5-B		<b>Accessories</b>	<b>27</b>
touchCUE-7-B		Cables & Adapters	
touchCUE-10-B		IR Adapter Set	
touchCUE-12-B		Opto-Input Adapter /i	
Tabletop Models		Serial Cable 5-pin to RJ-14	
touchCUE-5		Serial Cable 3-pin to RJ-14	
touchCUE-7		NFC Module	
touchCUE-10		NFC Module	
touchCUE-12		Power Supplies	
On-wall Models		CUEadapter-24P24	
touchCUE-7-M		CUEadapter-24DIN15	
touchCUE-10-M		DALIpwr	
touchCUE-12-M		PoE Adapter	
		Mounting Adapters	
		Tabletop Holder 55	
		Under Desk Holder 55	
		Wall Set 55	
		Pan Adapter 55	
		Rack Mounting Shelf	

# Commercial

## applications



### TRAINING ROOMS AND CLASSROOMS

In classrooms or training rooms, the Cue System makes it possible to:

- Simplify the operation of audio-visual equipment, lighting or HVAC
- Carry out central supervision of all rooms in the building and administer technology in all rooms centrally (e.g. central switching off of electrical equipment at night including rooms where teachers may have forgotten to turn off some of the facilities).
- Provide simple and complex reservation solution



## MEETING ROOMS & CONFERENCE SPACES

The Cue System offers the following benefits for meeting & conference rooms:

- Trouble-free running of presentations, automated one-touch control (for example, by pressing a button labelled PRESENTATION the whole room is set up into presentation mode – the projector is turned on, the projection screen rolls out, AV inputs are switched over to the presentation computer, appropriate light conditions are established, etc.)
- Nobody is put under stress of using complex technologies – the systems offers intuitive controlling with a minimum of control features
- With the Cue System, the operator can control the entire technical equipment in the room (audio-visual technology, projectors, monitors, DVD players, lighting, heating, air-conditioning, window blinds, etc.) on one panel
- Lighting can be controlled by pre-set light scenes which set all lighting devices to the desired light mood, simply by pressing a single button
- Remote control of rooms – if the operator has any problems with running the device, he or she can call the technical centre, which can set things remotely

- Remote and automated diagnosing, allowing for timely action in servicing (for example, the Cue System sends an e-mail to the service centre indicating that a lamp in the projector needs to be replaced or a filter has to be cleaned, or sends a warning that a device is not working properly).
- Simple and complex reservation solution



## MUSEUMS

The Cue System facilitates automated control of AV shows in museum expositions both by museum staff and visitors.

## NETWORK OPERATION CENTRES (NOC)

The Cue System offers:

- Automated operation of multi-screen systems
- Automated control of distributing AV signals for visual display units
- Controlling sources of AV signals, video cameras, recording equipment or sensors
- Elimination of error during operation, simplified manipulation.

## GOVERNMENT AND JUSTICE

The Cue System provides one-touch equipment to control AV technology such as audio and video conference facilities, voting equipment or recording devices in conference and court rooms. It dramatically reduces the number of technical staff needed for the controlling of those devices.

## LECTURE HALLS

In large lecture halls, the Cue System makes it possible to:

- Simplify the operation of all complex AV technologies currently in use, such as switching microphones, controlling sound systems, operating matrix switchers, video cameras and signal sources as well as running light effects – all this from one ergonomically designed touch panel
- Distribute AV technology into several zones at venues where the lecture hall can be divided into more rooms by means of movable walls
- Manage the distribution of audio-visual signals between several lecture halls.
- Provide simple and complex reservation solution

## HOTELS

In hotel spaces, the Cue System offers automated control of audio-visual equipment, lighting, heating, air-conditioning and other kinds of modern technology in meeting and conference rooms.



# Residential

## applications



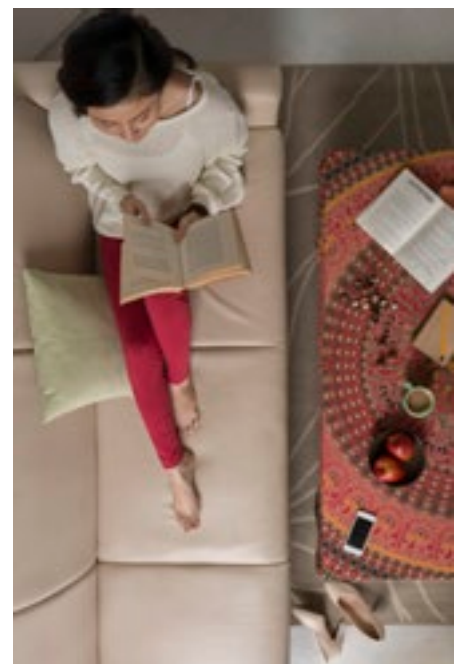
### WINDOW DRAPES, BLACKOUTS AND WINDOW TREATMENT

The control system can automatically manipulate window blinds according to the intensity of sunlight. This helps to regulate illumination and temperature in the room. In summer it can reduce the cost of air-conditioning in rooms subject to direct sunlight. In case of strong wind the system ensures that window blinds and awnings are retracted, protecting them from damage.



### SECURITY AND MONITORING CAMERA SURVEILLANCE

Thanks to the switch panels of the control system you can also control the intruder security systems. This means you do not need a separate keyboard for the security subsystem - all you need are the switch panels of the control system. The system can thus turn on the Presence Simulation when you leave and turn on the alarm, or send you a message in case of any alarm. In addition, thanks to the touch panel of the control system, you can monitor anything picked up by the security cameras mounted in your house. In this way, for instance, you can keep an eye on your children playing around the swimming pool.



## HEATING, VENTILATION AND AIR-CONDITION (HVAC) CONTROL

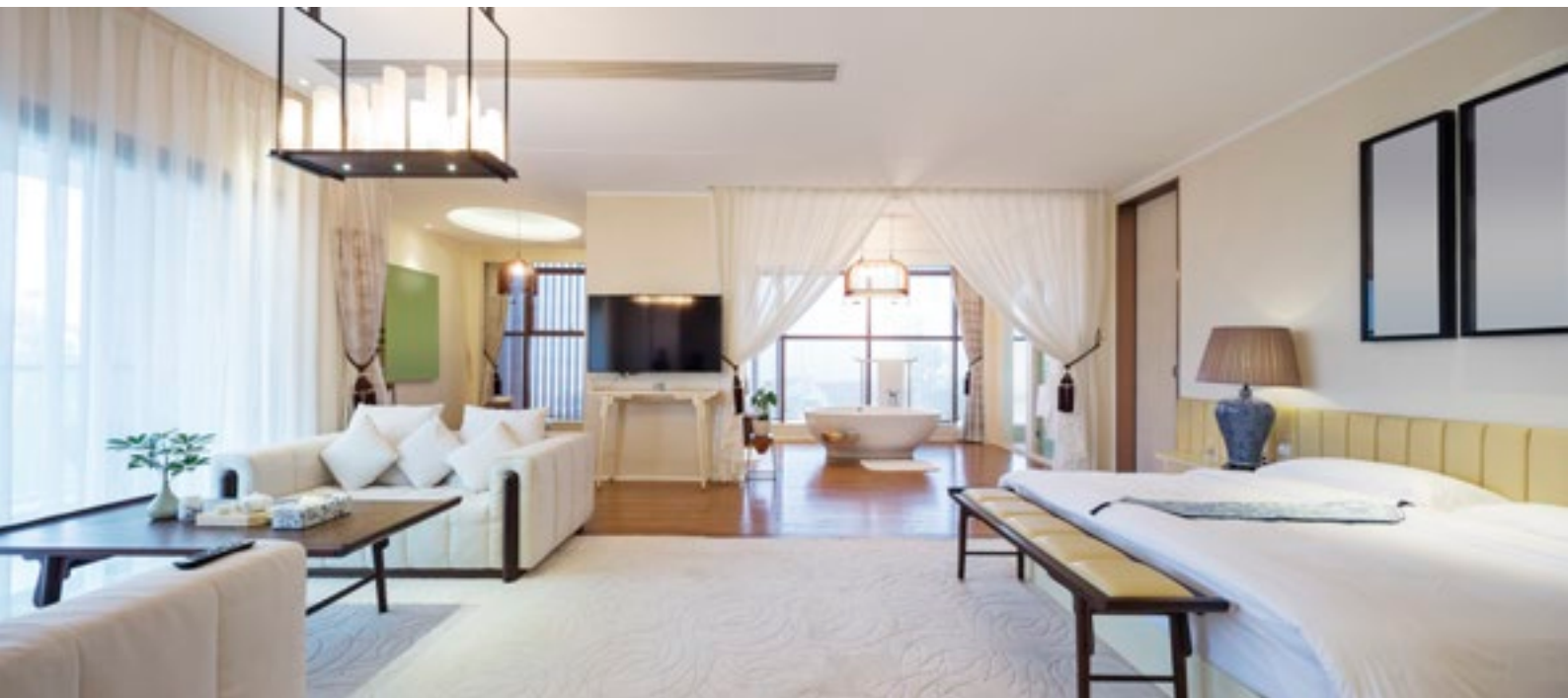
The control of heating and air-conditioning maintains thermal comfort while at the same time reducing energy consumption and therefore, costs. It is possible to programme suitable temperature modes for various days of the week or various times of the day, and also to establish an economy mode during your vacation. Heating and air-conditioning can be controlled for each room independently.

## LIGHTING AUTOMATION

The control system enables you to control lighting by selecting appropriate illumination levels suited for a given type of activity. If you are watching TV, for example, the system sets up all lights in the room to prevent them from disturbing the picture while maintaining adequate light levels for the room. The lighting can be changed automatically, depending on the time of the day.

## MULTIZONE AUDIO & VIDEO CONTROL

With the help of the touch panel or keyboards you can play your favourite music or turn on your chosen TV or radio programme, setting the volume to the desired level. The control system can automate these procedures for you. For example, it can turn on the news in the bathroom after you get up, switch on relaxing music when you come home, etc.



## HOME THEATRE CONTROL

The control system enables you to automate and simplify the operation of home audio-visual technology, eliminating the use of multiple remote controls. Pressing a single button WATCH MOVIE on your touch panel, for example, automatically switches on the TV, DVD player and the audio system. The appropriate inputs are selected, lighting in the room is set to the desired light mood and if it is sunny outside, the curtains are drawn.

## PERSONALIZED SEQUENCE OF ACTIONS

The control system can automatically carry out preset actions as required by the user. For example, after you come home and turn off the security system, the control system can switch on the lights and heating and play the background music. TV news come on at precisely the right time. The system can also record your regular activities during the day and use this data to simulate your presence in the house during your absence, thus discouraging uninvited visitors.



## AUTOMATED ENTRYWAYS AND GATES CONTROL

The connection of gates, doors and windows to the control system facilitates the automated unlocking of doors when you come home as well as automated locking when you leave. Should you forget to close any windows, the system will remind you.



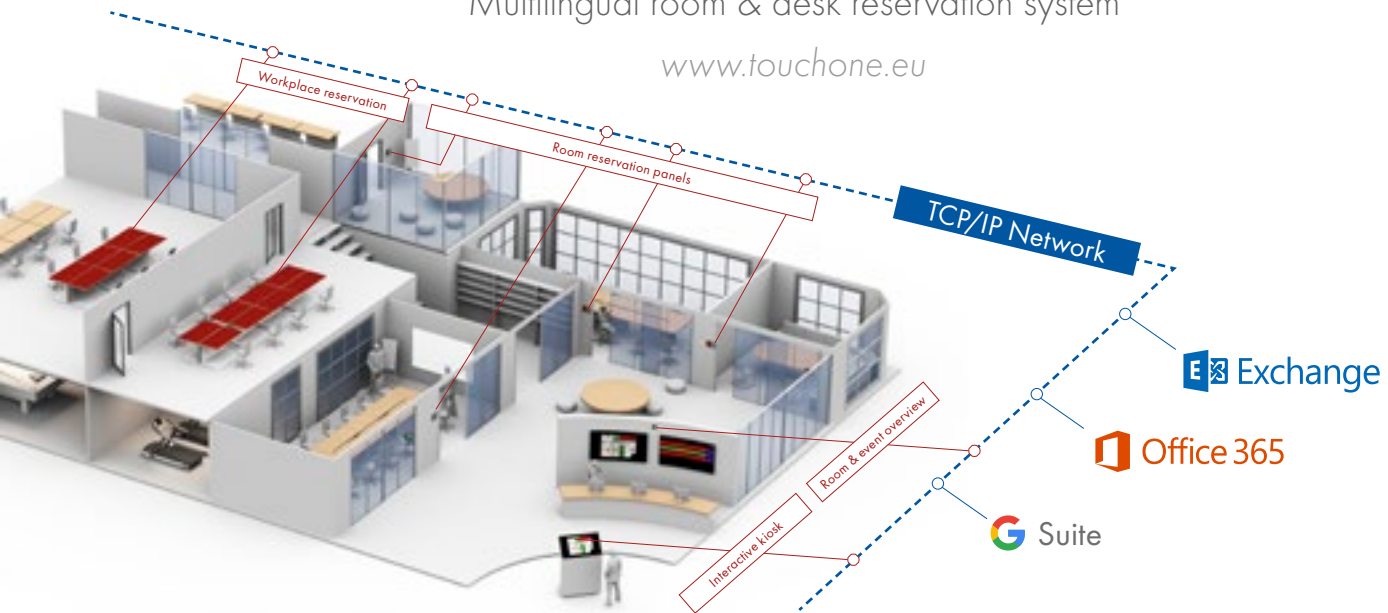
## REMOTE ACCESS TO ALL HOME SYSTEMS

You can access your home remotely via Internet, cloud or SMS text messages. Your home web site will enable you to monitor the current state of your house including interior and exterior temperatures, turning on the heating, recording your favourite TV programme or watering the lawn.

# Reservation System

Multilingual room & desk reservation system

[www.touchone.eu](http://www.touchone.eu)



## ROOM RESERVATION PANELS



**touchONE-7-M**



**touchONE-10-M**



**touchONE-12-M**

	CS0528	CS0563	CS0529
Product code	CS0528	CS0563	CS0529
Display	7" (177.8 mm) diagonal, color LCD, LED backlight	10.1" (256.5 mm) diagonal, color LCD, LED backlight	12.1" (307.3 mm) diagonal, color LCD, LED backlight
Resolution	1280 x 800 pixels	1280 x 800 pixels	1280 x 800 pixels
Viewing angle	160° horizontal, 160° vertical	170° horizontal, 170° vertical	160° horizontal, 160° vertical
Touch technology	Projected capacitive	Projected capacitive	Projected capacitive
Sensors	Light and proximity	Light and proximity	Light and proximity
Status indicators	Green for free room, red for occupied room	Green for free room, red for occupied room	Green for free room, red for occupied room
Network	Wired 10/100 BaseT Ethernet 802.1X and Proxy server support	Wired 10/100 BaseT Ethernet 802.1X and Proxy server support	Wired 10/100 BaseT Ethernet 802.1X and Proxy server support
Power supply	PoE, IEEE 802.3af / Class 0	PoE, IEEE 802.3af / Class 0	PoE+, IEEE 802.3at / Class 4
Enclosure	Aluminium, edge-to-edge front glass, protection IP30	Aluminium, edge-to-edge front glass, protection IP30	Aluminium, edge-to-edge front glass, protection IP30
Installation	On-wall, e.g. glass wall, no wall drilling or cutting needed Recommended height 150 cm	On-wall, e.g. glass wall, no wall drilling or cutting needed Recommended height 150 cm	On-wall, e.g. glass wall, no wall drilling or cutting needed Recommended height 150 cm
Dimensions	199 x 120 x 23 mm	268 x 167 x 25 mm	320 x 200 x 32 mm
Weight	0.8 kg	1.1 kg	2.2 kg
Available extension	NFC Module   CS0579	NFC Module   CS0579	-

## ROOM & WORKPLACE OVERVIEW

## ADMINISTRATION & ANALYTICS

## DATA CONCENTRATOR



**touchONE-overview**



**touchONE-manager**



**touchONE-concentrator**

	CS0510	CS0537	CS0571
Product code	CS0510	CS0537	CS0571
Display type	HDMI output for display connection	HDMI output, displays current IP settings only	HDMI output, displays current IP settings only
Resolution	1920 x 1080 pixels	1920 x 1080 pixels	1920 x 1080 pixels
Network	Wired 10/100 BaseT Ethernet 802.1X and Proxy server support	Wired 10/100 BaseT Ethernet 802.1X and Proxy server support	Wired 10/100 BaseT Ethernet 802.1X and Proxy server support
Power supply	5 VDC / 3 A, Power jack connector	5 VDC / 3 A, Power jack connector	5 VDC / 3 A, Power jack connector
Enclosure	Metal chassis, fanless and slim design	Metal chassis, fanless and slim design	Metal chassis, fanless and slim design
Dimensions	118 x 101 x 24 mm	118 x 101 x 24 mm	118 x 101 x 24 mm
Weight	0.3 kg	0.3 kg	0.3 kg



# Reservation System

## Solutions



### WORKPLACE RESERVATION INTERFACES



#### touchONE-4

Product code	CS0594
Display	4.3" (109 mm) diagonal, color LCD, LED backlit
Resolution	480 x 272 pixels
Viewing angle	140° horizontal, 120° vertical
Touch technology	Projected capacitive
NFC	Buil-in reader 13.56 MHz, norm ISO 14443A compatible
Status indicator	Green for free workplace, red for occupied workplace
Network	Wired 10/100 BaseT Ethernet, 802.1X support
Power supply	PoE, IEEE 802.3af / Class 1
Enclosure	Plastic, protection IP30
Installation	Tabletop or on-wall
Dimensions	128 x 102 x 35 mm
Weight	0.2 kg
Included accessories	Tabletop mounting adapter, Wall mounting adapter
Required unit	touchONE-concentrator for every 100 touchONE-4 units



#### touchONE-desk-55

Product code	CS0556
Status indicator	Green for free workplace, red for occupied workplace
Custom label	Desk identification QR code for reservation using mobile app
Buttons	Reserve desk, Leave desk
Network	Wired 10/100 BaseT Ethernet, 802.1X support
Power supply	PoE, IEEE 802.3af / Class 1
Enclosure	Aluminium, protection IP30
Installation	Tabletop or under desk, cable interconnection box, standard electrical box
Dimensions	55 x 55 x 12 mm when installed
Weight	0.1 kg
Available accessories	Tabletop Holder 55   CS0586, Under Desk Holder 55   CS0587, Wall Set 55   CS0583, Pan Adapter 55   CS0584
Required unit	touchONE-concentrator for every 100 touchONE-desk-55 units

### RESERVATION APP



#### touchONE-app

Product code	CS0554
Description	Room or desk personalized reservation from a mobile device. Rooms and desks are identified by QR code.
Operating systems	Apple iOS 8.0 or higher Android 4.1 or higher
Available	From Apple AppStore for Apple iOS From Google Play for Android

### SENSOR INTEGRATION



#### touchONE-sensor-app

Product code	CS0551
Description	Ready made XPL <sup>2</sup> application for occupancy sensor integration using controlCUE-versatile (-d) or smartCUE-versatile (-d). Sensors with dry contact output are connected to versatile ports. Easy web setup.
Available	From www.touchone.eu

### CONTROL INTEGRATION



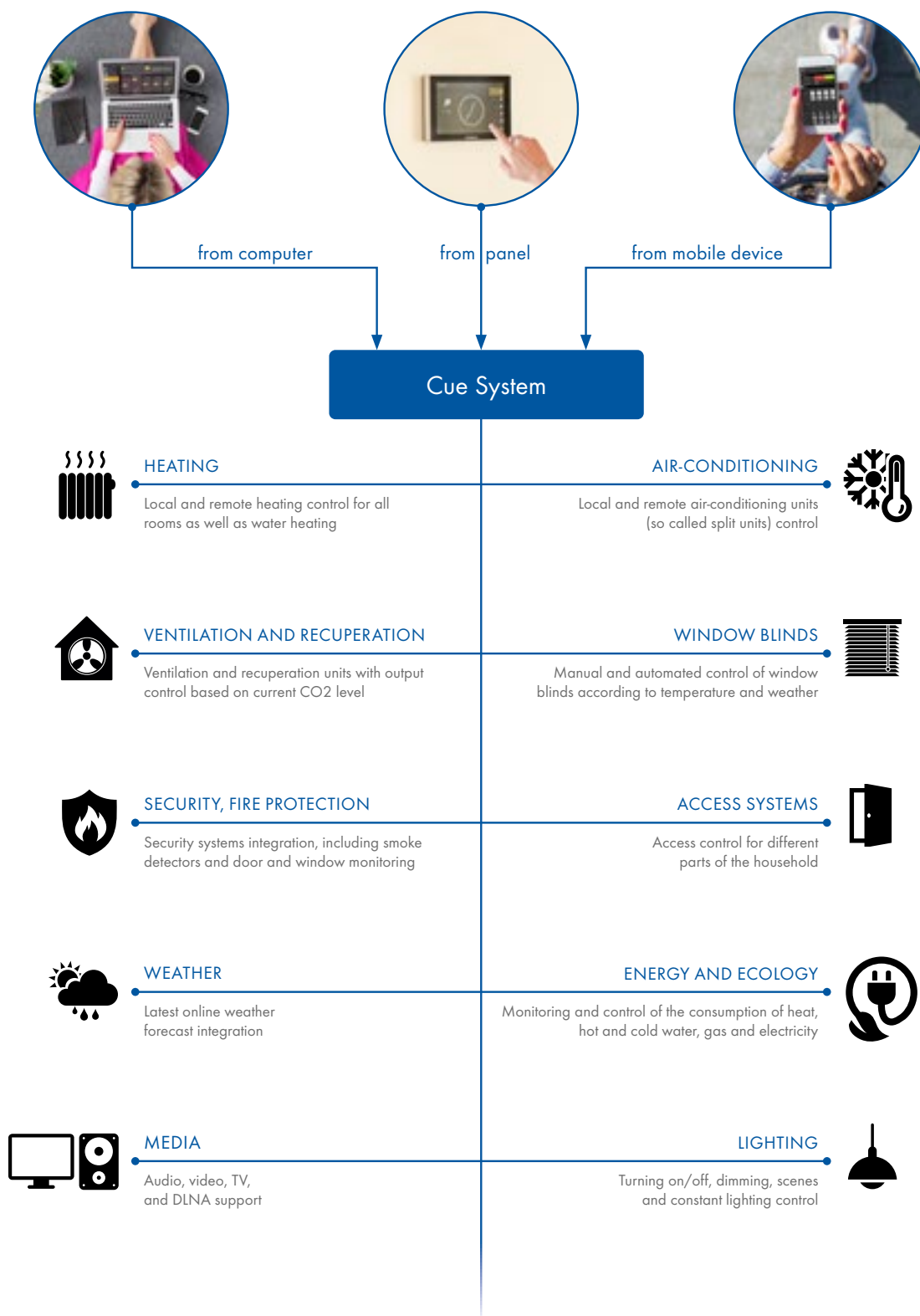
#### touchONE-control-widget

Product code	CS0582
Description	Cue Visual Composer widget allowing touchONE integration with room control system. The widget includes communication applet and reservation screen for room control touch panel where many reservation functions are available.
Available	Part of Cue Visual Composer

# Home Automation

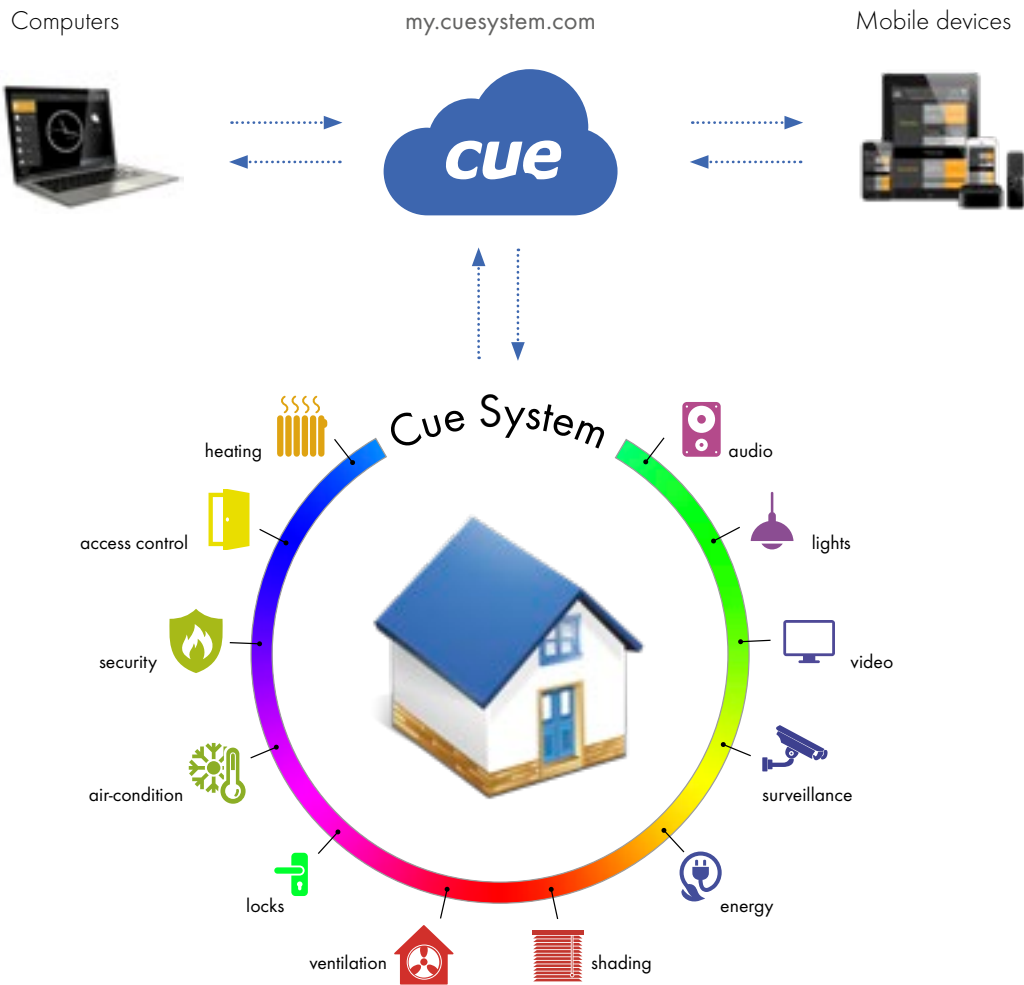
All home technologies joined together into a single system.

- Standard basic sets for various types of heating control
- On-wall touch panel with standardized graphic user interface
- DLNA functionality, security and other home automation systems integration
- Licenses for Apple iOS, Android and MS Windows devices
- Cloud services available for remote monitoring and control
- Room units for temperature and air quality control
- Demand-controlled ventilation
- Shading and constant lighting control
- Communications based Ethernet
- KNX, DALI, DMX512, EnOcean and other standards available



# Cloud-based Management

Access your Cue System from anywhere.



## GENERAL

- Simple, flexible and secure on-demand cloud solution
- Available through standard Internet-enabled devices
- No public IP address required for site
- Secure communication
- 24/7/365 availability

## USER ACCOUNTS

- Available for all users
- Easy access with just e-mail & password
- Simple site creation and deletion
- User friendly site management
- Software license management

## SITE MANAGEMENT

- Site = Cue System installation
- Site unique identification and friendly name
- Site details: description, location, picture, etc.
- Site administration
- Software projects and licenses

## SOFTWARE PROJECTS

- Cue Visual Composer project programming
- Project upload to cloud
- Site project upgrade
- Upgrade acceleration
- Costs reduction

## SOFTWARE FLOATING LICENSES

- Tool for license registration
- Flexible license management
- License transfer
- In most cases used for appCUE
- Floating licenses available for authorized users

## FIRMWARE MANAGEMENT

- Automated firmware upgrade
- The latest firmware version guaranteed
- Firmware versions managed by manufacturer
- Cost-effective firmware upgrade acceleration
- Costs reduction

## MOBILE APPLICATIONS

- Control applications available from cloud
- Free appCUE for Apple iOS, Android or MS Windows
- Easy and intuitive application setup
- Simple access from any Internet connected device
- Software license available on the cloud

## WEB USER INTERFACE

- Web-based interface for easy monitoring and control
- Typical for site mode, heating, energy, security, etc.
- Accessible from any device via Internet browser
- Communication in open-source data format, e.g. JSON
- Modules for site programming available

## SITE MONITOR & CONTROL

- Available anywhere with Internet-enabled device
- Real-time site data and remote preset activation
- Used for site mode, heating, ventilation, energy, security, locks, doors, gates, etc.
- Standardized or customized user interface

# Programming Tools

## OVERVIEW

Cue Visual Composer (CVC) is an All-In-One software for control application programming. CVC is innovative mainly due to its unique concept. Touch panels and controllers are programmed in the same way, which makes it possible to use touch panels as fully functional control units. One universal programming language XPL<sup>2</sup> allows to program graphical objects, touch panel layouts, device drivers and other parts of control application. Effective programming is achieved by visual programming approach with drag and drop, advanced editing technique IntelliSense, export and import of ready-to-use pieces of program and more. Application language localization and Unicode character support are inherent parts of CVC, so it does not require any programming effort. Any part of source code can be secured by a password to protect the author's intellectual property and also can be licensed to a specific hardware. Control application runs on CUE touch panels, controllers, Apple iOS devices, Android devices and Microsoft Windows computers.

## XPL<sup>2</sup> PROGRAMMING LANGUAGE

Cue Visual Composer thus becomes an open platform for a large group of application programmers and makes an important contribution to the development of modern graphical user interfaces. The XPL<sup>2</sup> programming language itself is tailored to the needs of control systems used to integrate various technologies. It includes a complete set of powerful commands that enable system integrators to achieve an effective, robust and easily maintainable code.

## PRE-PROGRAMMED BUILDING BLOCKS

Pre-programmed Building Blocks dramatically increase productivity in the preparation of control applications using Cue Visual Composer.

Currently CVC offers the following types:

- Graphic Collection is a set of ready-to-use graphic objects which allows to prepare touch panel graphical interface
- Device Driver is a part of XPL<sup>2</sup> code which communicates with the controlled device
- Applet is a part of the program that performs a specific task and runs within the context of a larger program, for example Sunrise/Sunset Timer, Simple Scheduler
- Widget is a small, fully functional application that can be inserted into a Cue Visual Composer project.

## GRAPHIC OBJECTS

Graphic objects are programmed at the level of standard XPL<sup>2</sup> language which includes graphical API (Application Programming Interface). When designing the touch panel graphic layout, application programmers therefore do not depend on a fixed set of objects delivered by the software manufacturer but are free to create their own, often very sophisticated objects or whole functional blocks. Runtime's Resize-On-Demand technology for graphic resources dramatically simplifies creating of graphical objects. It is not necessary to prepare special graphics for different objects sizes. Runtime's High Color Enhancer improves the subjective perception of color depth. On touch panels with 16-bit color depth the application graphics looks as if it had 24-bit color depth.

Software installation includes Cue Symbol Font with more than 130 symbols covering the needs of most control applications. The symbol set is grouped into Transport, Arrows & Movements, AV / TV Control, Indicators etc.

Software installation includes more than 140 black / white icons (bitmaps) covering most frequently used symbols and pictures.

## SIMULATION AND DEBUG

CVC and all runtimes for Microsoft Windows based computers can utilize multi-core processors. CVC offers many various ways how to debug and test applications, which significantly shortens the development cycle. The whole project can be simulated anytime on a computer or tested on real hardware units using their control ports.

For every unit in the project, this debug mode can be set individually and both simulation and real unit testing can be combined. CVC displays debug messages from simulated units and from real units too.

## FIRMWARE

Firmware update On-The-Fly is implemented for all CUE touch panels and controllers. All firmware is part of CVC installation. If CVC recognizes an older firmware version, it automatically updates firmware before debugging or final project uploading.



## Cue Visual Composer

Product code	PT0007
Compatibility	Microsoft® Windows 7/8/10, 32/64-bit

# Technologies Integration

## OVERVIEW

As the market gets filled with modern-day technological systems and gadgets, the range of systems for automation is really wide.

Nowadays, you can get anything online – from wireless audio system and smart light bulbs to a phone-controlled kettle. The dream of a modern person, you might think. But here comes the catch: each of these products comes with its own mobile device application. No matter whether you are a fan of Apple iOS, Android or MS Windows, these products are compatible with every common operating system. They are, however, not inter-compatible.

In practice this means that the more of these smart products you have, instead of having less work, you will have even more work every time you want to leave or return home. That is because your mobile device needs to contain many different applications for many different products and you have to open each of them in order to control all the smart technologies at your home. Not to mention that every application has a different design and way of controlling the affiliated product.

Moreover, it is not possible to automate the tasks based on specific triggers, such as date, time, temperature, the current weather etc.

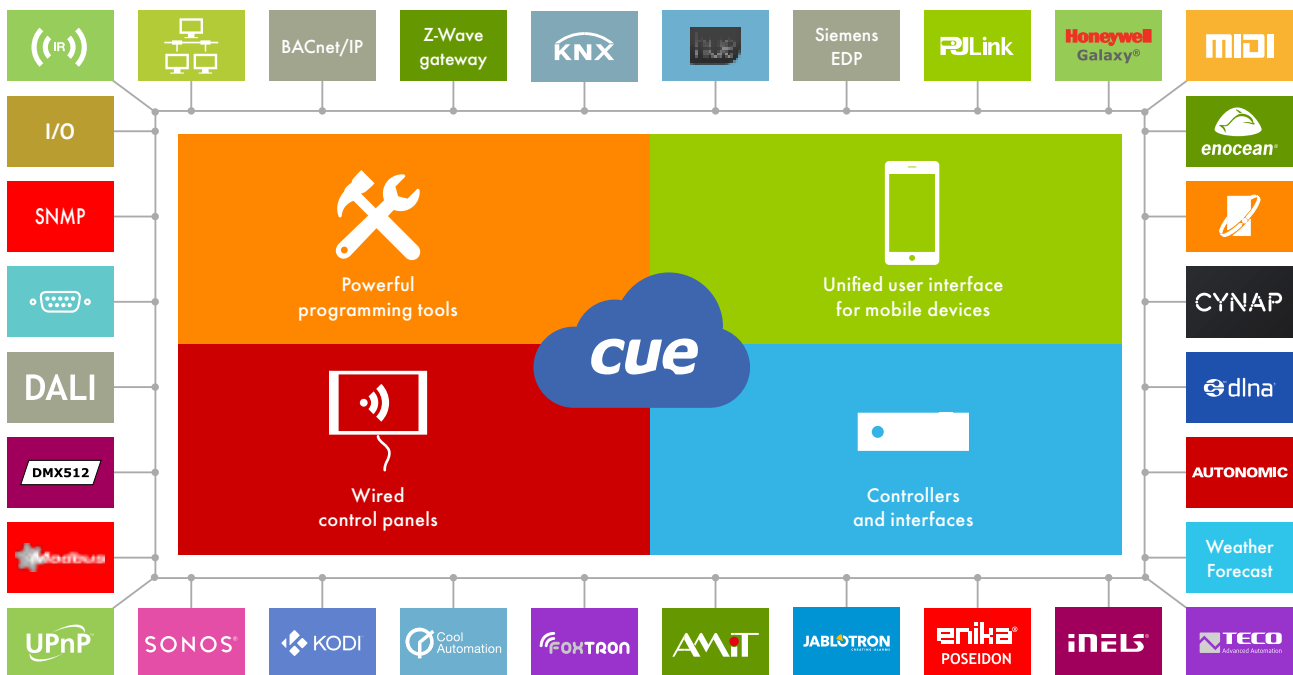
Vast majority of the automation technologies all around the world today (however good they may be) lack one very important feature – the integration of other similar technologies. That is the reason why people often experience problems while trying to create an automated environment.

Are you looking for a solution which is both smart and elegant? In that case the Cue System is exactly what you need.

## FEATURES

Based on the advanced hardware and software solution, the Cue System is able to:

- Integrate different devices, protocols and systems based on worldwide technologies KNX, DALI, DMX512, Modbus, EnOcean, DLNA and many others
- Provide straightforward and secure integration
- Enable data exchange between devices and systems
- Control and automate all technologies
- Visualize all technologies on mobile devices and touch panels
- Control all technologies from a single application on your mobile device and thus eliminate all the individual applications affiliated with separate technologies
- Control all technologies using wireless/tabletop/wall touch panels, keypads, button panels, etc.
- Trigger all technologies by date, time, sunrise/sunset, temperature, etc.
- Offer convenient and consistent operation
- Offer a high level of flexibility owing to extensive support of various standards
- Simulate presence at home by turning on/off the lights, AV technologies, window blinds etc. based on a schedule which can emerge from the real behaviour of the occupiers
- Offer not only mobile device applications, but also built-in touch panels and control units.



# Supported Technologies

## IT Standard Technologies



- Supported protocols: ARP, DHCP, DLNA, ICMP, DNS, FTP, HTTP, HTTPS, IPv4, KNXnet/IP, LDAP, NTP, POP3, RTSP, UPnP, DLNA, SMTP, SNMP trap, SSDP, SSH, SSL, TCP/IP, Telnet, TLS, UDP/IP, UPnP, Wake-On-LAN, Web Server
- Software: built-in firmware or device drivers

## DMX512

DMX512

- Digital MultipleX, EIA-485 physical layer
- Standard for stage lighting, effects, interior and architectural lighting
- Connection: dedicated port on controlCUE-dmx-d
- Software: API functions and device drivers

## Modbus TCP | Modbus Serial



- Open standard for industry, buildings, traffic, energy, etc.
- Client-server communication for Modbus TCP
- Master-slave communication for Modbus Serial
- Connection: IP or serial port
- Software: device drivers

## BACnet/IP

BACnet/IP

- ASHRAE building automation and control networking protocol
- Cue System monitoring by building management systems (BMS)
- Integration of HVAC, lighting, access control, fire detection, etc.
- Connection: IP port
- Software: device drivers

## MIDI

MIDI

- Musical Instrument Digital Interface
- Electronic musical instrument industry communication
- Also used for show control, theatre lighting, effects, etc.
- Connection: serial port
- Software: device drivers

## CoolMasterNet



- HVAC system control - mode, fan, setpoint, swing
- Fully compatible with air conditioning indoor units by Daikin, Mitsubishi, Toshiba, Fujitsu, LG, Hitachi, Gree and similar
- Connection: IP or serial port
- Software: device drivers

## Serial



- RS-232/422/485 standards
- Bi-directional communication for control and feedbacks
- Typical for AV switchers, projectors, TVs, industry, etc.
- Connection: serial port, IR/serial output or versatile port
- Software: device drivers

## Input and Outputs

I/O

- Digital, voltage and resistance inputs, digital pulse counter, current loop, temperature and light sensors
- Digital outputs, analog outputs, low and high relays, dimming outputs, etc.
- Software: device drivers

## DALI

DALI

- Digital Addressable Lighting Interface
- Data protocol and transport mechanism for light control
- Cue System as IP backbone between 64 devices subnets
- Connection: dedicated port on controlCUE-dali-d
- Software: API functions and device drivers

## KNX | KNXnet/IP



- Open standard conforming to EN 50090 and ISO/IEC 14543
- Twisted pair cable, IP or RF for data transmission
- Connection: dedicated port on controlCUE-knx-d for KNX TP (twisted pair), IP port for KNXnet/IP
- Software: API functions and device drivers

## EnOcean



- RF standard for sustainable building projects
- Self-powered RF as a core technology
- Connection: dedicated RF port on controlCUE-enocean-d or controlCUE-hub
- Software: API functions and device drivers

## Z-Wave Gateway

Z-Wave gateway

- Solution for Vera Z-Wave gateway
- Switch power, dimming, scene controllers, temperature sensors, setpoints, energy meters and security sensors integration
- Connection: IP port
- Software: device drivers

## OpenTherm



- Communication for heating systems
- Point-to-point master (thermostat or controller) / slave (boiler) protocol
- Connection: serial port
- Software: device driver available on request

## PJLink

PJLink

- Unified protocol for data projectors control
- IP based
- Vendor independent
- Connection: IP port
- Software: device driver

## Infrared



- One-way communication, no feedback from controlled device
- CUE controllers equipped with IR capture
- IR adapters or blasters for transmitting
- Connection: IR/serial output, versatile port
- Software: device drivers

## Weather Forecast

Weather Forecast

- Weather data access for control applications
- Standard HTTP requests
- Ready-to-use widget
- Connection: IP port, Internet access requested
- Software: widget - device driver and graphic object

# Supported Technologies

## UPnP



- Universal Plug and Play networking protocols for device discovering and communication establishing
- Server, renderer and controller device types
- Connection: IP port
- Software: widget - device driver and graphic objects

## SNMP Trap



- Simple Network Management Protocol for IP device monitoring
- Monitored device sends the SNMP trap without being asked in order to notify the managing system of an event.
- Connection: IP port
- Software: device driver for SNMP trap sending

## KODI



- Media player for Linux, OSX, Windows, iOS, and Android
- Videos, music, pictures, etc. from local storage or Internet
- UPnP compatible
- Connection: IP port
- Software: widget - device driver and graphic objects

## Philips Hue



- Fully customizable light bulbs
- Up to 16 million colors by combining three LEDs
- Up to 50 Hue light bulbs wirelessly connected to the IP bridge
- Connection: IP port
- Software: device driver

## Honeywell Galaxy



- Integrated intruder and access control security solution
- Monitoring and control of detectors and other subsystems connected to security central units
- Connection: IP or serial port
- Software: device drivers

## Amit



- Control systems for building and industrial automation
- Ethernet interface
- Communication based on Modbus TCP
- Connection: IP port
- Software: device driver

## Enika Poseidon



- Wireless system for intelligent electrical installation
- Switches, window blinds receivers, light controllers, dimmers and other units controlled through Modbus TCP
- Connection: IP port
- Software: device driver

## INELS



- Wired and wireless system for intelligent electrical installation
- Transmitters and actuators monitored and controlled through Ethernet interface
- Connection: IP port
- Software: device driver

## DLNA



- Digital Living Network Alliance
- Inter-operability guidelines for digital media sharing between multimedia devices - NAS, TVs, network speakers, etc.
- Connection: IP port
- Software: widget - device driver and graphic objects

## WolfVision CYNAP



- Collaboration system control
- Direct control from touch panel, no processor needed
- Touch panel and mobile application available
- Connection: IP port
- Software: complete application incl. device driver and user interface

## Sonos



- Hi-Fi wireless speakers and audio components
- Digital music collection in one app
- Control from any device
- Connection: panel IP port
- Software: widget - device driver and graphic objects

## Autonomic Controls Mirage



- Media server control from any CUE user interface
- GUI for touch panels, mobile devices and computers
- Integration based on IP protocols Telnet and HTTP
- Connection: IP port
- Software: widget - device driver and graphic objects

## Siemens EDP



- Enhanced Datagram Protocol for alarm / access systems
- Monitoring and control of detectors and other subsystems connected to security central units
- Connection: IP port
- Software: device driver

## Tecomat PLC EPSNET



- Automation system interfaced through Ethernet
- Sending and receiving data concerning the state of variables via the EPSNET protocol
- Connection: IP port
- Software: set of device drivers

## Foxtron



- Control interfaces for intelligent electrical installation
- Switching units, drivers, dimmers and converters interfaced through various communication standards
- Connection: DALI, KNX, DMX and serial port for PEX
- Software: device driver

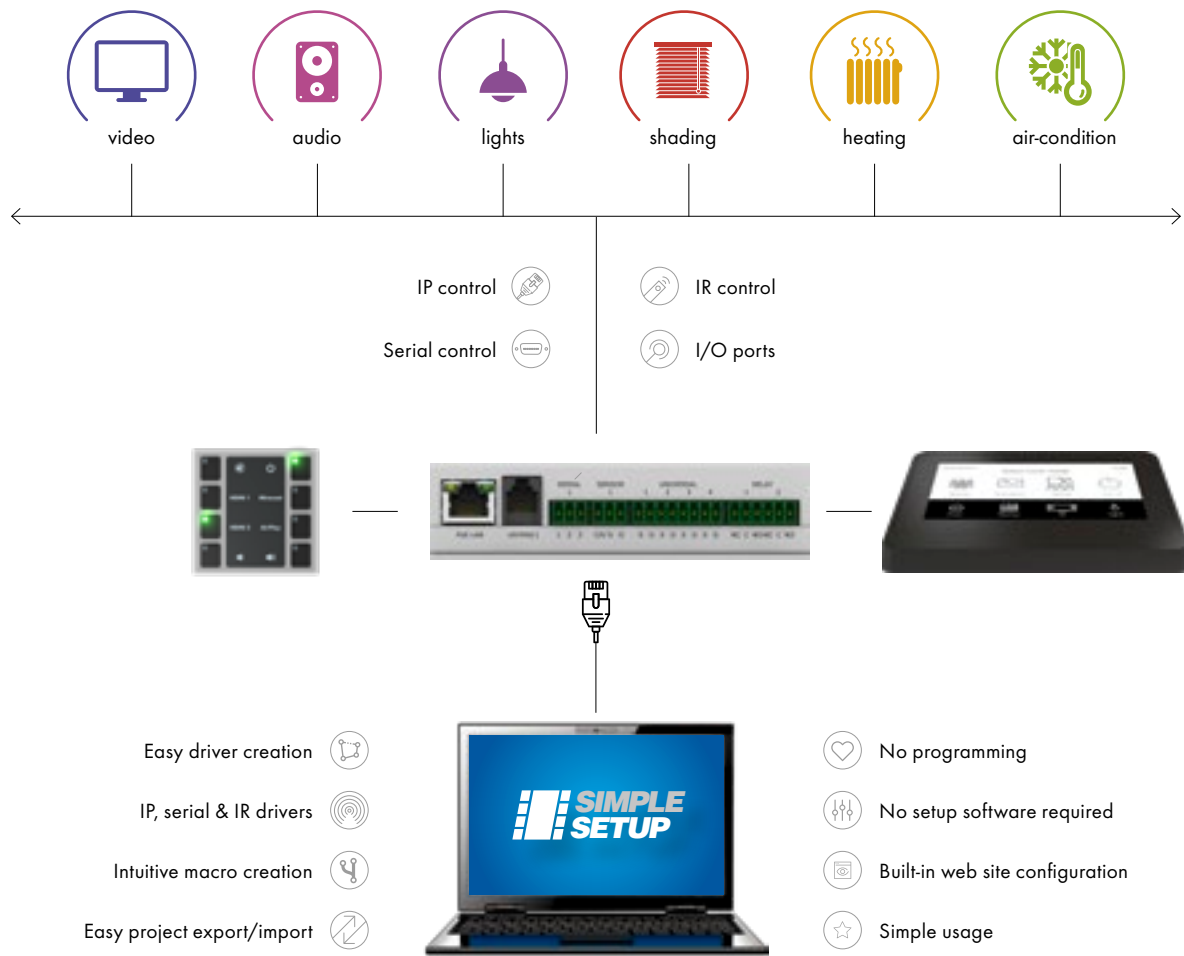
## JABLOTRON



- Security system
- Monitoring and control of detectors and other subsystems connected to security central units
- Connection: serial port
- Software: device driver

# Basic Control Solution

Simple and cost-effective control solution for any meeting room



## liteCUE-basic

## liteCUE-tap

	liteCUE-basic	liteCUE-tap
Product code	CS0588	CS0593
Description	Cost-effective control system with button keypad Perfect for small sized applications	Cost-effective control system with touch-screen keypad Perfect for small and medium sized applications
Control panel	8-button keypad, programmable green LED in each button User-defined button label, white backlight with variable brightness Single cable connection for power and data communication Grey aluminium enclosure 55 x 55 mm fits to many standard interconnection boxes	Touch-screen keypad User-defined button labels and indicators Single cable connection for power and data communication Elegant plastic enclosure 128 x 102 x 35 mm for tabletop or on-wall installation
Controller	Wired 10/100 BaseT Ethernet, 802.1X and Proxy server support Powerful support for IP device control 1x keypad port incl. power supply output 12 VDC and RS-485 data communication 1x bi-directional serial port RS-232/485 1x sensor port incl. power supply output 12VDC and digital input 4x universal port - each can be used as digital I/O, serial RS-232 output or IR output 2x low-voltage relay 24 V / 0.5 A Power supply PoE, IEEE 802.3af / Class 0 Aluminum enclosure, dimensions 120 x 30 x 80 mm	Wired 10/100 BaseT Ethernet, 802.1X and Proxy server support Powerful support for IP device control 1x keypad port incl. power supply output 12 VDC and RS-485 data communication 1x bi-directional serial port RS-232/485 1x sensor port incl. power supply output 12VDC and digital input 4x universal port - each can be used as digital I/O, serial RS-232 output or IR output 2x low-voltage relay 24 V / 0.5 A Power supply PoE, IEEE 802.3af / Class 0 Aluminum enclosure, dimensions 120 x 30 x 80 mm
Weight	0.3 kg	0.4 kg
Included accessories	Keypad cable, Connector set, Ethernet cable	Keypad cable, Connector set, Ethernet cable



# Wired Keypads

## BUTTON KEYPADS



White aluminium RAL9006



Signal white RAL9003

### keypadCUE-55

Product code	CS0542-9006	CS0542-9003
Description	White aluminium keypad compatible with frames 55 x 55 mm	Signal white keypad compatible with frames 55 x 55 mm
Buttons	8x	8x
Custom labels	User-defined button label White backlight with variable brightness	User-defined button label White backlight with variable brightness
Indicators	Programmable green LED in each button	Programmable green LED in each button
Data communication	Serial RS-485	Serial RS-485
Power supply	24 VDC / max. 2 W	24 VDC / max. 2 W
Enclosure	Aluminium, color RAL9006 Protection IP30	Aluminium, color RAL9003 Protection IP30
Dimensions	55 x 55 x 12 mm when installed	55 x 55 x 12 mm when installed
Weight	0.1 kg	0.1 kg
Included accessories	6P6C connector	6P6C connector
Available accessories	Tabletop Holder 55   CS0586 Under Desk Holder 55   CS0587 Wall Set 55   CS0583 Pan Adapter 55   CS0584	Tabletop Holder 55   CS0586 Under Desk Holder 55   CS0587 Wall Set 55   CS0583 Pan Adapter 55   CS0584

## TOUCH-SCREEN KEYPAD



### tapCUE-4

Product code	CS0589
Description	Touch-screen keypad with user-defined button labels and indicators
Display	4.3" (109 mm) diagonal, color LCD, LED backlit
Resolution	480 x 272 pixels
Viewing angle	140° horizontal, 120° vertical
Touch technology	Projected capacitive
NFC	Buil-in reader 13.56 MHz, norm ISO 14443A compatible
Indicator	Programmable RGB LED
Network	Wired 10/100 BaseT Ethernet, 802.1X support
Power supply	PoE, IEEE 802.3af / Class 1
Enclosure	Plastic, protection IP30
Installation	Tabletop or on-wall
Dimensions	128 x 102 x 35 mm
Weight	0.2 kg
Included accessories	Tabletop mounting adapter Wall mounting adapter

# Wired Touch Panels

- Ethernet IP-enabled touch panels for tabletop usage
- Application and license server for mobile applications
- Full motion streaming video preview
- Colors 32-bit (True Color), transparency 8-bit Alpha blending
- Real time clock (RTC) for scheduling applications
- Bi-directional control of any IP-enabled products through Ethernet port
- Easy network integration
- Power over Ethernet (PoE)
- Web server and Admin Web for setup through a standard web browser
- Power supply and Ethernet cable included

## BUILT-IN MODELS



**touchCUE-5-B**



**touchCUE-7-B**



**touchCUE-10-B**



**touchCUE-12-B**

	<b>touchCUE-5-B</b>	<b>touchCUE-7-B</b>	<b>touchCUE-10-B</b>	<b>touchCUE-12-B</b>
Product code	CS0372	CS0452	CS0560	CS0467
Display type	Color IPS LCD with LED backlit	Color a-Si TFT LCD with LED backlit	Color IPS LCD with LED backlit	Color a-Si TFT LCD with LED backlit
Display size	4.3" (109 mm) diagonal	7" (177.8 mm) diagonal	10.1" (256.5 mm) diagonal	12.1" (307.3 mm) diagonal
Resolution	800 x 480 pixels	1280 x 800 pixels	1280 x 800 pixels	1280 x 800 pixels
Viewing angle	160° horizontal, 160° vertical	160° horizontal, 160° vertical	170° horizontal, 170° vertical	160° horizontal, 160° vertical
Touch overlay	Projected capacitive	Projected capacitive	Projected capacitive	Projected capacitive
Side indicators	-	-	Programmable RGB LED	-
Sensors	Light and proximity	Light and proximity	Light and proximity	Light and proximity
Audio	Microphone and speakers	Microphone and speakers	Microphone and speakers	Microphone and speakers
RAM / Flash	512 MB / min. 4 GB	512 MB / min. 4 GB	512 MB / min. 4 GB	512 MB / min. 4 GB
Network	Wired 10/100 BaseT Ethernet 802.1X authentication mechanism Proxy server support	Wired 10/100 BaseT Ethernet 802.1X authentication mechanism Proxy server support	Wired 10/100 BaseT Ethernet 802.1X authentication mechanism Proxy server support	Wired 10/100 BaseT Ethernet 802.1X authentication mechanism Proxy server support
Power supply	PoE, IEEE 802.3af / Class 0	PoE, IEEE 802.3af / Class 0	PoE, IEEE 802.3af / Class 0	PoE+, IEEE 802.3at / Class 4
Enclosure	Aluminium, edge-to edge front glass Protection IP30	Aluminium, edge-to edge front glass Protection IP30	Aluminium, edge-to edge front glass Protection IP30	Aluminium, edge-to edge front glass Protection IP30
Installation	Built-in, compatible with standard electrical wall boxes Recommended height 150 cm	Built-in, compatible with standard electrical wall boxes Recommended height 150 cm	Built-in, compatible with standard electrical wall boxes Recommended height 150 cm	Built-in, compatible with standard electrical wall boxes Recommended height 150 cm
Dimensions	136 x 81 x 11 mm when installed Full depth 37 mm	199 x 120 x 16 mm when installed Full depth 39 mm	268 x 167 x 16 mm when installed Full depth 37 mm	320 x 200 x 22 mm when installed Full depth 47 mm
Weight	0.3 kg	0.6 kg	0.9 kg	2.0 kg
Included accessories	PoE power supply, Ethernet cable, Wall mounting adapter	PoE power supply, Ethernet cable, Wall mounting adapter	PoE power supply, Ethernet cable, Wall mounting adapter	PoE+ power supply, Ethernet cable, Wall mounting adapter

## SIMPLE THREE-STEP INSTALLATION



# Wired Touch Panels

## TABLETOP MODELS



**touchCUE-5**



**touchCUE-7**



**touchCUE-10**



**touchCUE-12**

	<b>touchCUE-5</b>	<b>touchCUE-7</b>	<b>touchCUE-10</b>	<b>touchCUE-12</b>
Product code	CS0371	CS0451	CS0559	CS0466
Display type	Color IPS LCD with LED backlight	Color a-Si TFT LCD with LED backlight	Color IPS LCD with LED backlight	Color a-Si TFT LCD with LED backlight
Display size	4.3" (109 mm) diagonal	7" (177.8 mm) diagonal	10.1" (256.5 mm) diagonal	12.1" (307.3 mm) diagonal
Resolution	800 x 480 pixels	1280 x 800 pixels	1280 x 800 pixels	1280 x 800 pixels
Viewing angle	160° horizontal, 160° vertical	160° horizontal, 160° vertical	170° horizontal, 170° vertical	160° horizontal, 160° vertical
Touch overlay	Projected capacitive	Projected capacitive	Projected capacitive	Projected capacitive
Side indicators	-	-	Programmable RGB LED	-
Sensors	Light and proximity	Light and proximity	Light and proximity	Light and proximity
Audio	Microphone and speakers	Microphone and speakers	Microphone and speakers	Microphone and speakers
RAM / Flash	512 MB / min. 4 GB	512 MB / min. 4 GB	512 MB / min. 4 GB	512 MB / min. 4 GB
Network	Wired 10/100 BaseT Ethernet 802.1X authentication mechanism Proxy server support	Wired 10/100 BaseT Ethernet 802.1X authentication mechanism Proxy server support	Wired 10/100 BaseT Ethernet 802.1X authentication mechanism Proxy server support	Wired 10/100 BaseT Ethernet 802.1X authentication mechanism Proxy server support
Power supply	PoE, IEEE 802.3af / Class 0	PoE, IEEE 802.3af / Class 0	PoE, IEEE 802.3af / Class 0	PoE+, IEEE 802.3at / Class 4
Enclosure	Aluminium, edge-to edge front glass Protection IP30 Integrated tabletop stand	Aluminium, edge-to edge front glass Protection IP30 Integrated tabletop stand	Aluminium, edge-to edge front glass Protection IP30 Integrated tabletop stand	Aluminium, edge-to edge front glass Protection IP30 Integrated tabletop stand
Dimensions	136 x 81 x 73 mm	199 x 115 x 97 mm	268 x 155 x 121 mm	320 x 192 x 153 mm
Weight	0.4 kg	0.8 kg	1.1 kg	2.4 kg
Included accessories	PoE power supply, Ethernet cable	PoE power supply, Ethernet cable	PoE power supply, Ethernet cable	PoE+ power supply, Ethernet cable

## ON-WALL MODELS



**touchCUE-7-M**



**touchCUE-10-M**



**touchCUE-12-M**

	<b>touchCUE-7-M</b>	<b>touchCUE-10-M</b>	<b>touchCUE-12-M</b>
Product code	CS0539	CS0561	CS0540
Display type	Color a-Si TFT LCD with LED backlight	Color IPS LCD with LED backlight	Color a-Si TFT LCD with LED backlight
Display size	7" (177.8 mm) diagonal	10.1" (256.5 mm) diagonal	12.1" (307.3 mm) diagonal
Resolution	1280 x 800 pixels	1280 x 800 pixels	1280 x 800 pixels
Viewing angle	160° horizontal, 160° vertical	170° horizontal, 170° vertical	160° horizontal, 160° vertical
Touch overlay	Projected capacitive	Projected capacitive	Projected capacitive
Side indicators	-	Programmable RGB LED	-
Sensors	Light and proximity	Light and proximity	Light and proximity
Audio	Microphone and speakers	Microphone and speakers	Microphone and speakers
RAM / Flash	512 MB / min. 4 GB	512 MB / min. 4 GB	512 MB / min. 4 GB
Network	Wired 10/100 BaseT Ethernet 802.1X authentication mechanism Proxy server support	Wired 10/100 BaseT Ethernet 802.1X authentication mechanism Proxy server support	Wired 10/100 BaseT Ethernet 802.1X authentication mechanism Proxy server support
Power supply	PoE, IEEE 802.3af / Class 0	PoE, IEEE 802.3af / Class 0	PoE+, IEEE 802.3at / Class 4
Enclosure	Aluminium, edge-to edge front glass Compatible with VESA 75 x 75 mm Protection IP30	Aluminium, edge-to edge front glass Compatible with VESA 75 x 75 mm Protection IP30	Aluminium, edge-to edge front glass Compatible with VESA 75 mm x 75 mm Protection IP30
Installation	Multisurface incl. glass wall Recommended height 150 cm	Multisurface incl. glass wall Recommended height 150 cm	Multisurface incl. glass wall Recommended height 150 cm
Dimensions	199 x 120 x 23 mm	268 x 167 x 25 mm	320 x 200 x 32 mm
Weight	0.8 kg	1.1 kg	2.2 kg
Included accessories	PoE power supply, Ethernet cable	PoE power supply, Ethernet cable	PoE+ power supply, Ethernet cable
Available extension	NFC Module   CS0579	NFC Module   CS0579	-

# Mobile Solution



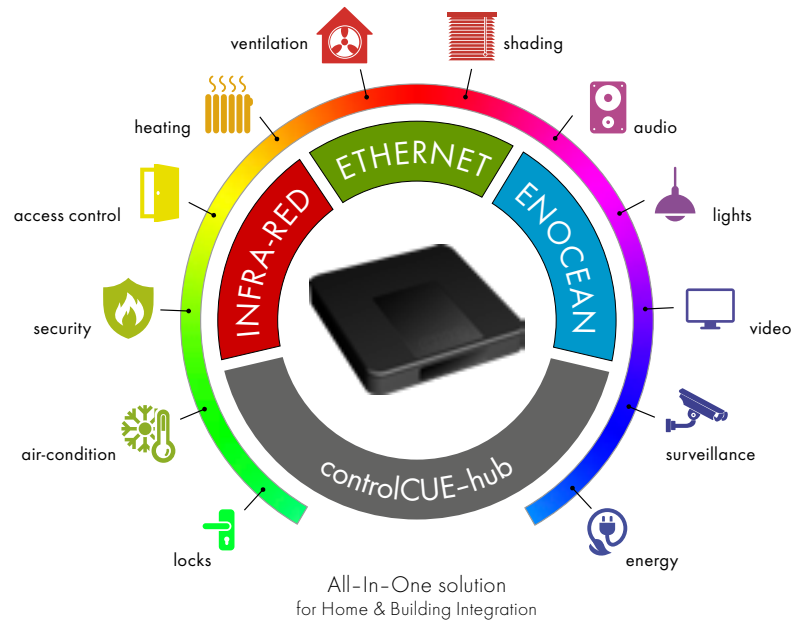
- Runtimes for control applications running on Apple iOS, Android and MS Windows
- Control applications and licenses downloaded from local application & license server (touch panel or controller) or from cloud
- Supports the execution of programs written in XPL<sup>2</sup> language
- Enables use of any mobile device as a Cue System control panel
- Suitable addition to CUE control panels and controllers
- GUI applications designed in Cue Visual Composer
- System communication based on IP using CUEnet<sup>2</sup> protocol
- Any IP device can be controlled directly
- Complete set of XPL<sup>2</sup> IP commands available



## appCUE

Product code	CS0485
Operating systems	Apple iOS 7.00 and higher Android 4.1 and higher Microsoft® Windows 7/8/10, 32/64-bit
Resolution	Defined by application Full screen mode available
Network	Wired or wireless (Wi-Fi)
System communication	CUEnet <sup>2</sup>
IP commands	Complete set available for IP control
Free download from	Apple AppStore for Apple iOS Google Play for Android CUE Web page for MS Windows
Application notes	The appCUE needs controller or touch panel used as application and license server. The appCUE does not operate with nodeCUE without application and license server. The appCUE allows use IP commands for network controlled devices.

# Controllers



- Ethernet IP-enabled controller and integration hub
- Application and license server for mobile applications
- Wired network communication, IP control through Ethernet port
- Hub for EnOcean integration
- IR codes capture and blaster for infra-red controlled devices
- LED indicators
- Real time clock (RTC) for scheduling applications
- Web server and Admin Web for setup through a standard web browser
- USB power supply
- Elegant slim black enclosure, tabletop or on-wall installation

## WALL-MOUNT | FREE STANDING MODEL



### controlCUE-hub

Product code	CS0487
RAM / Non-volatile flash	64 MB / 256 MB
Network	Wired 10/100 BaseT Ethernet
Wireless	EnOcean 868 MHz
Infra-red	Built-in receiver for code capturing Built-in blaster for control
Power supply	5 VDC / max. 4 W, USB-C connector
Enclosure	Black plastic, protection IP20
Dimensions	120 x 120 x 24 mm
Weight	0.2 kg
Included accessories	Wall power supply 5 VDC, Ethernet cable

# Controllers

- Ethernet IP-enabled controllers
- Application and license server for mobile applications
- Variety types of control ports
- Bi-directional control of any IP-enabled products through Ethernet port
- Real time clock (RTC) for scheduling applications
- Web server and Admin Web for setup through a standard web browser
- Aluminium enclosure
- For available accessories see section Accessories

## WALL-MOUNT | FREE STANDING MODEL



### controlCUE-basic

Product code	CS0552
RAM / Flash	64 MB / 256 MB
IR receiver for capture	1x
Network	Wired 10/100 BaseT Ethernet 802.1X authentication mechanism supported Proxy server support
Keypad port	Power supply output 12 VDC, RS-485 data communication
Bi-directional serial port	1x RS-232/485
Universal port	4x
Versatile port	-
Sensor port	Power supply output 12 VDC, digital input
Low-voltage relay	2x 24 V / 0.5 A
Power supply	PoE, IEEE 802.3af / Class 0
Enclosure	Aluminum, protection IP20
Dimensions	120 x 30 x 80 mm
Weight	0.2 kg
Included accessories	Connector set, Ethernet cable
Available accessories	IR Adapter /i, Opto-Input Adapter /i, Serial cables

## RACK-MOUNT | FREE STANDING MODEL



### controlCUE-versatile

Product code	CS0475
RAM / Flash	64 MB / 256 MB
IR receiver for capture	1x
Network	Wired 10/100 BaseT Ethernet 802.1X authentication mechanism supported Proxy server support
Keypad port	-
Bi-directional serial port	3x RS-232/485
Universal port	-
Versatile port	8x
Sensor port	-
Low-voltage relay	-
Power supply	24 VDC / max. 4 W   PoE, IEEE 802.3af / Class 0
Enclosure	Aluminum, protection IP20
Dimensions	105 x 43.5 x 92 mm
Weight	0.3 kg
Included accessories	Wall power supply 24 VDC / 24 W, Connector set, Ethernet cable
Available accessories	Rack Mounting Shelf, IR Adapter /i, Opto-Input Adapter /i, Serial cables

## RACK-MOUNT | FREE STANDING MODELS



### controlCUE-one

Product code	CS0412
RAM / Flash	512 MB / min. 4 GB
IR receivers	1x for capture 1x for wireless control panels
Network	Wired 10/100 BaseT Ethernet 802.1X authentication mechanism supported Proxy server support
Bi-directional serial port	2x RS-232/422/485
IR/Serial output	4x
General I/O	4x
Low-voltage relay	2x 24 V / 0.5 A
Audio	Line in, line out
Power supply	24 VDC / max. 4 W
Enclosure	Aluminum, protection IP20
Dimensions	210 x 43.5 x 92 mm
Weight	0.5 kg
Included accessories	Wall power supply 24 VDC / 24 W, Connector set, Ethernet cable
Available accessories	Rack Mounting Shelf, IR Adapter /i, Opto-Input Adapter /i, Serial cables



### controlCUE-two

Product code	CS0414
RAM / Flash	512 MB / min. 4 GB
IR receivers	1x for capture 1x for wireless control panels
Network	Wired 10/100 BaseT Ethernet 802.1X authentication mechanism supported Proxy server support
Bi-directional serial port	6x RS-232/422/485
IR/Serial output	8x
General I/O	8x
Low-voltage relay	4x 24 V / 0.5 A
Audio	Line in, line out
Power supply	24 VDC / max. 4 W
Enclosure	Aluminum, protection IP20
Dimensions	210 x 43.5 x 92 mm
Weight	0.6 kg
Included accessories	Wall power supply 24 VDC / 24 W, Connector set, Ethernet cable
Available accessories	Rack Mounting Shelf, IR Adapter /i, Opto-Input Adapter /i, Serial cables

# Controllers

- Ethernet IP-enabled controllers
- Application and license server for mobile applications
- Variety types of control ports
- Bi-directional control of any IP-enabled products through Ethernet port
- Front panel LED indicators for all control ports
- Real time clock (RTC) for scheduling applications
- Web server and Admin Web for setup through a standard web browser
- For available accessories see section Accessories

## DIN RAIL MODELS



**controlCUE-versatile-d**



**controlCUE-dali-d**



**controlCUE-knx-d**

Product code	CS0453	CS0454	CS0455
RAM / Flash	64 MB / 256 MB	64 MB / 256 MB	64 MB / 256 MB
IR receiver for capture	1x	1x	1x
Network	Wired 10/100 BaseT Ethernet 802.1X authentication mechanism supported Proxy server support	Wired 10/100 BaseT Ethernet 802.1X authentication mechanism supported Proxy server support	Wired 10/100 BaseT Ethernet 802.1X authentication mechanism supported Proxy server support
Bi-directional serial port	3x RS-232/485	1x RS-232/485	1x RS-232/485
Versatile port	8x	4x	4x
DALI	-	1x, external DALI power supply required	-
KNX	-	-	1x, external KNX power supply required
Power supply	24 VDC / max. 4 W PoE, IEEE 802.3af / Class 0	24 VDC / max. 4 W PoE, IEEE 802.3af / Class 0	24 VDC / max. 4 W PoE, IEEE 802.3af / Class 0
Enclosure	Plastic, DIN rail, 4 M, protection IP20	Plastic, DIN rail, 4 M, protection IP20	Plastic, DIN rail, 4 M, protection IP20
Dimensions	70 x 90 x 58 mm	70 x 90 x 58 mm	70 x 90 x 58 mm
Weight	0.2 kg	0.2 kg	0.2 kg
Included accessories	DIN rail power supply 24 VDC / 15 W, Connector set, Ethernet cable	DIN rail power supply 24 VDC / 15 W, Connector set, Ethernet cable	DIN rail power supply 24 VDC / 15 W, Connector set, Ethernet cable
Available accessories	IR Adapter /i, Opto-Input Adapter /i, Serial cables	IR Adapter /i, Opto-Input Adapter /i, Serial cables	IR Adapter /i, Opto-Input Adapter /i, Serial cables

## DIN RAIL MODELS



**controlCUE-dmx-d**



**controlCUE-enocean-d**

Product code	CS0456	CS0458
RAM / Flash	64 MB / 256 MB	64 MB / 256 MB
IR receiver for capture	1x	1x
Network	Wired 10/100 BaseT Ethernet 802.1X authentication mechanism supported Proxy server support	Wired 10/100 BaseT Ethernet 802.1X authentication mechanism supported Proxy server support
Bi-directional serial port	1x RS-232/485	1x RS-232/485
Versatile port	4x	4x
DMX512	2x	-
EnOcean RF	-	868 MHz for Europe
Power supply	24 VDC / max. 4 W PoE, IEEE 802.3af / Class 0	24 VDC / max. 4 W PoE, IEEE 802.3af / Class 0
Enclosure	Plastic, DIN rail, 4 M, protection IP20	Plastic, DIN rail, 4 M, protection IP20
Dimensions	70 x 90 x 58 mm	70 x 90 x 58 mm
Weight	0.2 kg	0.2 kg
Included accessories	DIN rail power supply 24 VDC / 15 W, Connector set, Ethernet cable	DIN rail power supply 24 VDC / 15 W, Antenna incl. cable, Connector set, Ethernet cable
Available accessories	IR Adapter /i, Opto-Input Adapter /i, Serial cables	IR Adapter /i, Opto-Input Adapter /i, Serial cables

# Lightweight Controllers

- Cost effective controllers
- IP-enabled for system communication CUEnet<sup>2</sup> only
- IP device control and e-mails not supported
- Variety types of control ports
- Front panel LED indicators for all control ports
- Real time clock (RTC) for scheduling applications
- Power over Ethernet
- Web server and Admin Web for setup through a standard web browser
- Tabletop or DIN rail compatible enclosure
- For available accessories see section Accessories

## RACK-MOUNT | FREE STANDING MODELS



**smartCUE-relay**



**smartCUE-versatile**

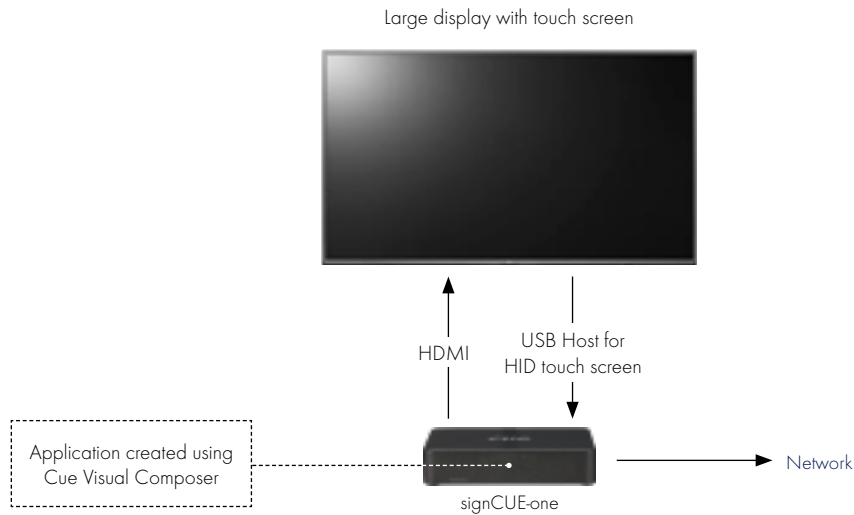


**smartCUE-versatile-d**

	CS0496	CS0491	CS0492
Product code	CS0496	CS0491	CS0492
IR receiver for capture	1x	1x	1x
Network	Wired 10/100 BaseT Ethernet 802.1X authentication mechanism supported Proxy server support	Wired 10/100 BaseT Ethernet 802.1X authentication mechanism supported Proxy server support	Wired 10/100 BaseT Ethernet 802.1X authentication mechanism supported Proxy server support
Bi-directional serial port	3x RS-232/485	3x RS-232/485	3x RS-232/485
Versatile port	6x	8x	8x
Low-voltage relay	6x 24 V / 0.5 A	-	-
Power supply	24 VDC / max. 4 W PoE, IEEE 802.3af / Class 0	24 VDC / max. 4 W PoE, IEEE 802.3af / Class 0	24 VDC / max. 4 W PoE, IEEE 802.3af / Class 0
Enclosure	Aluminum Protection IP20	Aluminum Protection IP20	Plastic, DIN rail, 4 M Protection IP20
Dimensions	105 x 43.5 x 92 mm	105 x 43.5 x 92 mm	70 x 90 x 58 mm
Weight	0.3 kg	0.3 kg	0.2 kg
Included accessories	Wall power supply 24 VDC / 24 W, Connector set, Ethernet cable	Wall power supply 24 VDC / 24 W, Connector set, Ethernet cable	DIN rail power supply 24 VDC / 15 W, Connector set, Ethernet cable
Available accessories	Rack Mounting Shelf, IR Adapter /i, Opto-Input Adapter /i, Serial cables	Rack Mounting Shelf, IR Adapter /i, Opto-Input Adapter /i, Serial cables	IR Adapter /i, Opto-Input Adapter /i, Serial cables



# Graphic Player & Touch Screen Interface



- Standalone graphic player for touch screen displays
- Runs standard projects created using Cue Visual Composer
- Interactive display integration with reservation system touchONE
- Customized additions for reservation system touchONE
- Powerful controller for IP controlled devices
- Server for appCUE mobile control applications
- HDMI 2.0 output with resolution 1920 x 1080 pixels
- USB Host interface for HID compliant touch screens
- Internal memory RAM 2 GB, flash 16 GB
- Wired 10/100/1000 BaseT Ethernet
- Bi-directional control of any IP-enabled products through Ethernet port
- 802.1X authentication mechanism supported
- Proxy server support
- Web server and admin web for setup through a standard web browser
- Power supply 5 VDC
- Fan-less operation
- Small dimension, low profile, surface mountable
- Simple installation close to display device



## signCUE-one

Product code	CS0550
Display type	HDMI output for display connection
Resolution	1920 x 1080 pixels
RAM / Flash	2 GB / 16 GB
Network	Wired 10/100/1000 BaseT Ethernet 802.1X and Proxy server support
Power supply	5 VDC / 3 A Power jack connector
Enclosure	Metal chassis, fan-less and slim design Protection IP30
Dimensions	118 x 101 x 24 mm
Weight	0.3 kg
Included accessories	Power supply 5 VDC, Ethernet cable, Mounting accessories

# Interfaces

## POWER SWITCHING



**relayCUE-8**

Product code	CS0335-1 (version 110 V) CS0335-2 (version 230 V)
Description	Eight-relay switching unit
Potential free relay	4x C-NO, 4x NC-C-NO
Max. voltage	250 VAC
Max. output load	Resistive load: 10 A per relay Capacitive load: 10 A per relay Inductive load: 2 A per relay
Serial communication	RS-485
Potential	8x for potential free contact
Test buttons	8x
Indicators	Power Serial channel activity Status of all relays
Power supply	230 or 110 VAC / max. 6 VA
Enclosure	Plastic, DIN rail, 9 M Protection IP20
Dimensions	158 x 90 x 58 mm
Weight	0.5 kg

## SUPPRESSOR



**PES03**

Product code	CS0168
Description	Three-channel suppressor unit for switching channels
Potential free relay	-
Max. voltage	275 VAC
Max. output load	10 A
Serial communication	-
Potential	-
Test buttons	-
Indicators	-
Power supply	-
Enclosure	Plastic, DIN rail, 2 M Protection IP20
Dimensions	36 x 90 x 58 mm
Weight	0.1 kg

## OUTPUTS



**PEA208**

Product code	CS0225-1 (version 110 V) CS0225-2 (version 230 V)
Description	Analog output 0 - 10 V Built-in relays LED indicators
Inputs	4x Potential free contact
Outputs	2x Analog output 0 - 10 V 2x Relay 230 V, max. 8 A
Communication	RS-485
Buttons	4x test button
Indicators	Power, serial channel, status of outputs
Power supply	110 or 230 VAC / max. 12 VA
Enclosure	Plastic, DIN rail, 4 M Protection IP20
Dimensions	71 x 90 x 58 mm
Weight	0.3 kg

## DIMMERS



**PET102**

Product code	CS0244-1 (version 110 V) CS0244-2 (version 230 V)	CS0245-1 (version 110 V) CS0245-2 (version 230 V)
Description	One-channel dimmer Suitable for electronic transformers	One-channel dimmer Suitable for electronic transformers
Outputs	1x	1x
Output load type	Resistive and capacitive	Resistive and capacitive
Max. output load	2 A per channel	5 A per channel
Over-current protection	Electronic	Electronic
Serial communication	RS-485	RS-485
Inputs	2x for potential free contact	2x for potential free contact
Test buttons	2x	2x
Indicators	Power Serial channel activity Status of output	Power Serial channel activity Status of output
Power supply	230 or 110 VAC / max. 6 VA	230 or 110 VAC / max. 6 VA
Enclosure	Plastic, DIN rail, 3 M Protection IP20	Plastic, DIN rail, 6 M Protection IP20
Dimensions	53 x 90 x 58 mm	106 x 90 x 58 mm
Weight	0.5 kg	0.5 kg



**PET105**

# Accessories

## CABLES & ADAPTERS



**IR Adapter Set**



**Opto-Input Adapter /i**



**Serial Cable 5-pin to RJ-14**



**Serial Cable 3-pin to RJ-14**

Product code	CS0553	CS0257	CA0183	CA0184
Description	5x infra-red emitter compatible with IR/ Serial output and versatile port. Mounting on the receiver window with double-sided adhesive tape.	Photosensitive cell sensor compatible with General I/O and Versatile port. Mounting on the indicator with double-sided adhesive tape.	RS-485 serial cable between controller and power switching units, dimmers and interfaces.	RS-485 serial cable between controller and power switching units, dimmers and interfaces.
Cable length	2 m	2 m	1 m	0.2 m
Connectors	2-pin, 3.5 mm	2-pin, 3.5 mm	5-pin, 3.5 mm   RJ-14	3-pin, 3.5 mm   RJ-14

## NFC MODULE



**NFC Module**

Product code	CS0579
Compatibility	Norm ISO 14443A, 13.56 MHz reader touchONE-7-M rev. R09 and higher touchONE-10-M touchCUE-7-M rev. R09 and higher touchCUE-10-M
Extension for	
Enclosure	Plastic
Dimensions	84 x 16 x 6 mm when installed
Weight	15 g
Note	This module will allow the panels to be ready for use of NFC technology. Ask for software support availability.

## POWER SUPPLIES



**CUEadapter-24P24**



**CUEadapter-24DIN15**



**DALIpwr**



**PoE Adapter**

Product code	CS0437	CS0474	CS0459	CS0327
Description	AC/DC switching mode power supply	AC/DC switching mode mode power supply	DALI power supply	PoE injector compliant with IEEE 802.3af/at standards
Power supply	90 to 240 VAC, 50/60Hz	85 to 264 VAC, 50/60Hz	85 to 264 VAC, 50/60Hz	100 to 240 VAC, 50/60Hzr
Output	24 VDC / 24 W	24 VDC / 15 W	Max. current 240 mA	Ethernet with PoE,
Connector	2-pin, 3.5 mm	Terminals	Terminals	RJ-45 connector
Enclosure	Plastic Protection IP40	Plastic, DIN rail, 2 M Protection IP20	Plastic, DIN rail, 1 M Protection IP20	Plastic, Protection IP40
Dimensions	94 x 46 x 36 mm	25 x 93 x 56 mm	17 x 90 x 58 mm	131 x 60 x 33 mm
Weight	0.2 kg	0.1 kg	0.05 kg	0.2 kg

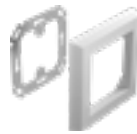
## MOUNTING ADAPTERS



**Tabletop Holder 55**



**Under Desk Holder 55**



**Wall Set 55**



**Pan Adapter 55**



**Rack Mounting Shelf**

Product code	CS0586	CS0587	CS0583	CS0584	CS0449
Description	This holder allows to install keypadCUE-55 or touchONE-desk-55 on the top of the table. It attaches on the top side of the table desk.	This holder allows to install keypadCUE-55 or touchONE-desk-55 under the table. It attaches on the under side of the table desk.	This set allows to install keypadCUE-55 or touchONE-desk-55 on the wall. It is fully compatible with standard electrical wall boxes.	This adapter allows to install keypadCUE-55 or touchONE-desk-55 into PANCONNECT interconnection boxes that are not prepared for CUE products.	This rack mounting shelf allows to install rack-mount controllers into standard 19" rack.
Accessories for	keypadCUE-55 touchONE-desk-55	keypadCUE-55 touchONE-desk-55	keypadCUE-55 touchONE-desk-55	keypadCUE-55 touchONE-desk-55	Rack-mount controllers
Enclosure	Grey metal	Grey metal	Metal wall adapter, white plastic frame	Metal	Stainless steel
Dimensions	55 x 47 x 55 mm	55 x 100 x 34 mm	Frame 81 x 81 x 10.7 mm	49.5 x 49.5 x 2 mm	Rack 19", 1 U 482.6 x 43.5 x 165 mm
Weight	80 g	85 g	40 g	10 g	1.3 kg

## Application



# ***cue***

